

The Management intensive Grazing Schools are designed to teach producers, educators and agency staff the basics of managing intensive grazing with a hands-on approach.

This intensive workshop provides opportunities for in-depth discussions, field exercises, and reference materials that cover both livestock and agronomic topics related to grazing. The school is required before accessing state cost share.

All are welcome! Take time to attend. You'll be glad you did!



Sponsored in part by:

Linn County Soil & Water
Conservation District

Linn County MU Extension
21262 Genoa Road
Linneus, MO 64653



Regional Grazing School

**September 30-
October 2, 2025**

**Northern Missouri Research,
Extension and Education Center-**

Cornett Farm

21262 Genoa Road
Linneus, Missouri



Equal opportunity/ADA institution

Regional Management Intensive Grazing School

September 30– October 2, 2025, Linneus, Missouri

Tuesday, September 30

Registration begins at 12:30 pm

Program begins at 1:00 pm

**The program will conclude each evening
between 5:00 and 6:00 pm**

Topics to be covered include:

- Art & Science of MiG
- Inventory: Evaluating the Resources
- Basic Plant Growth, Forage Quality and Persistence
- Basic Soil Structure, Function and Fertility
- Basic Animal Nutrition
- Fencing: classroom and field demonstration
- Matching Forages and Animals
- Watering Systems
- Grazer's Arithmetic
- Layout and Design
- Grazing System Economics
- Local Farm Tours

FOR MORE INFORMATION

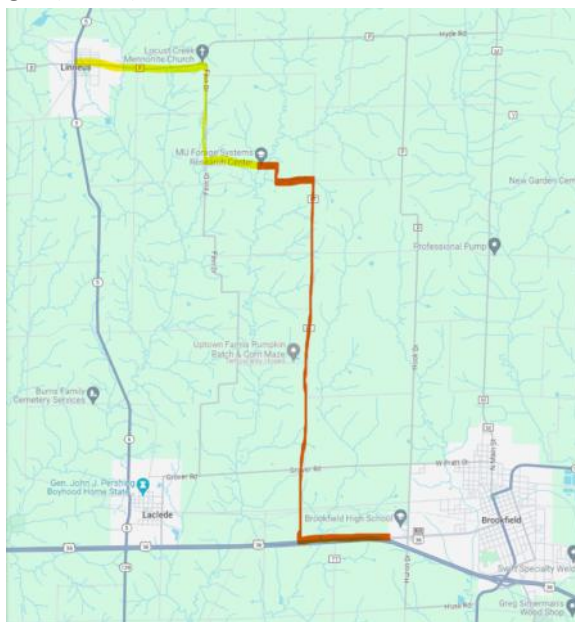
or if you need special accommodations because of a disability, need materials in an alternative format, or if you have specific dietary restrictions, contact Valerie Tate at 660-895-5123 or tatev@missouri.edu

The event will be held at the MU Cornett Farm located at 21262 Genoa Road, Linneus.

GPS coordinates: 39.897584, -93.147907

From Linneus

Head east on Hwy P approximately 1.5 miles until the blacktop veers left and the gravel road veers right. Turn right (southeast) onto Finn Drive. Follow Finn Drive approximately 1.5 miles. Turn left (east) onto Genoa Road. Follow Genoa Road approximately 0.5 mile. The building is on the right (south).



From Brookfield

Head west on Hwy 36 approximately 3 miles to Hwy FF. Turn right (north). Follow Hwy FF approximately 5 miles to Genoa Road. Turn left (west) onto Genoa Road. Follow Genoa Road approximately 1.5 miles. The building is on the left (south).

REGISTRATION INFORMATION

Cost of the regional grazing school is \$150 for the first person and \$100 for the second person per farm/firm. The fee covers one set of grazing materials and lunch on Wednesday and Thursday. Payment must be received by September 12.

1ST ATTENDEE'S NAME

2ND ATTENDEE'S NAME

ADDRESS

CITY, STATE, & ZIP

PHONE

EMAIL

REGISTRATION FEE ENCLOSED \$ _____

Dietary Restrictions:

**Please return form and check by
September 12 made payable to:**

MU Extension Linn County
21262 Genoa Road
Linneus, MO 64653